

H&H Mobile Storage Units

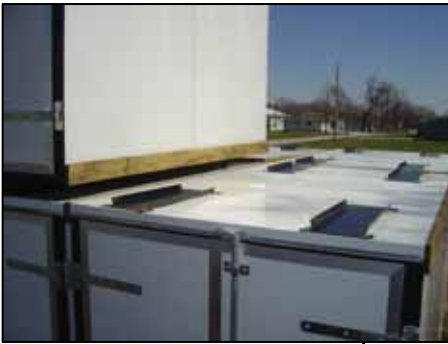
Easy to transport



Standard Features

- Full Tube Steel Construction with LINE-X® coated rear bulkhead.
- .030 white aluminum with 4" top and bottom rub rails.
- Full width, double swing doors (5', 6', or 8' wide depending on model) with brass bushed hinges.
- 5.2mm Lauan interior walls with 5/8" plywood flooring.
- Full length fork lift tubes that protect the crossmembers and flooring.
- **1-year limited warranty on frame and crossmembers.**
- **Maximum Stack Limit = 3 Mobile Storage Units.**

Stackable
Stackable



Easily stack by resting the fork lift tubes in the fork lift cradles.

NOTE: Maximum stack limit = 3 MSUs.



Dry, secure storage...
Anywhere!

Swing Doors

Available on Both Ends!

Order a 2nd Set of Swing Doors for \$385

Model	MSRP	Details
MSU4x6 48	\$1,225.00	4' wide, 6' length, 48" interior height
MSU5x8 72	\$1,850.00	5' wide, 8' length, 72" interior height
MSU6x8 72	\$2,013.00	6' wide, 8' length, 72" interior height
MSU6x8 84	\$2,319.00	6' wide, 8' length, 84" interior height
MSU6x12 84	\$2,625.00	6' wide, 12' length, 84" interior height
MSU7x14 84	\$3,219.00	7' wide, 14' length, 84" interior height
MSU8x10 84	\$2,844.00	8' wide, 10' length, 84" interior height
MSU8x12 84	\$3,125.00	8' wide, 12' length, 84" interior height
MSU8x14 84	\$3,332.00	8' wide, 14' length, 84" interior height
MSU8x16 84	\$3,644.00	8' wide, 16' length, 84" interior height
MSU8x20 84	\$4,388.00	8' wide, 20' length, 84" interior height

Prices and specifications can and WILL change without notice.